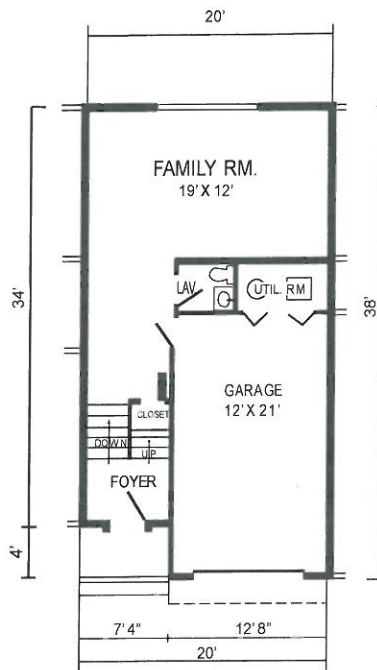


Ridgewood

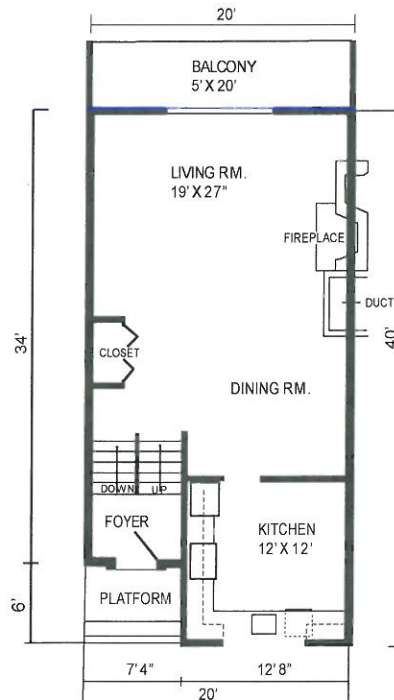
FLOOR PLANS

For more information, please contact:
 East Coast Properties, LLC
 Property Manager: Cyndy Anselmo
 400 Highland Avenue, Suite 11
 Salem, MA 01970
 (978) 741-2003



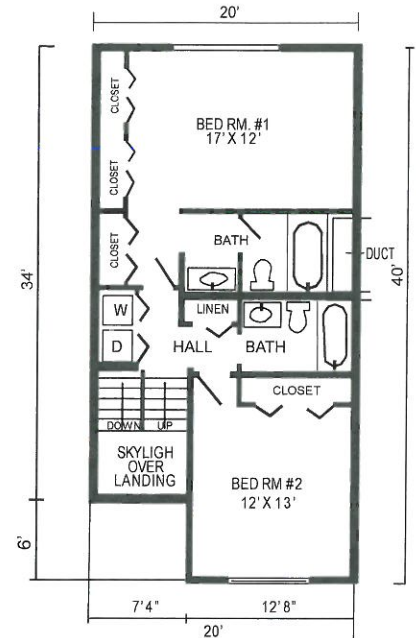
FIRST FLOOR LAYOUT

INTERIOR: 423 SQ. FT. +/-
 GARAGE: 308 SQ. FT. +/-



SECOND FLOOR LAYOUT

756 SQ. FT. +/-



THIRD FLOOR LAYOUT

760 SQ. FT. +/-

Total Square Footage: 2,247 +/-
 (Includes garage)

Inviting 3-story townhome offers a generous sized gourmet kitchen with a windowed view of the rolling terrain; lower level family room with patio doors leading to a private rear yard, and fireplaced living room with access to an oversized balcony. The third floor features an abundance of closet space, laundry hookup for a standard size washer and dryer, and oversized bedrooms with 2 full baths.